

# BODY MEASUREMENTS



**CHEST**

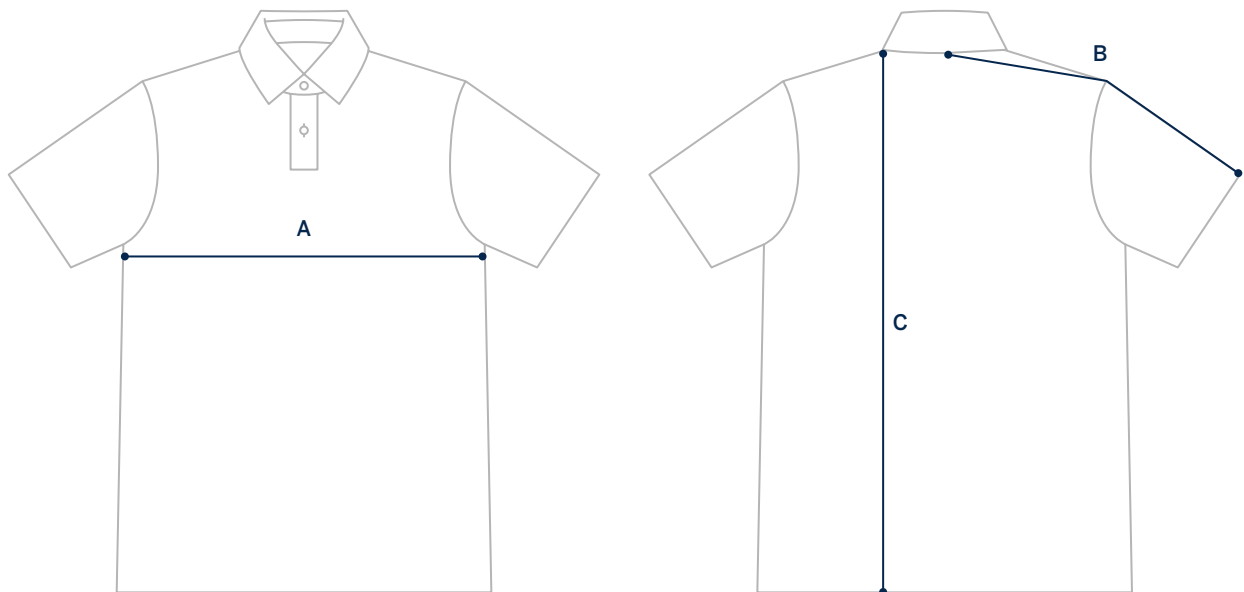
Measure around your torso, under your arms around the fullest part of your chest.

## MEASUREMENTS

SIZE	XS	S	M	L	XL	XXL
CHEST	81.5–86.5cm	89–94cm	96.5–101.5cm	104–109cm	111.5–116.5cm	119–124cm

# GARMENT MEASUREMENTS

The most precise way of finding your size. Measure a garment you love and compare to our garment measurements.



## MEASUREMENTS

SIZE	XS	S	M	L	XL	XXL
A: CHEST	43.8cm	47.6cm	51.4cm	55.2cm	59cm	65.4cm
B: SLEEVES	39cm	41cm	42.9cm	44.8cm	46.7cm	48.6cm
C: LENGTH	71cm	71cm	73cm	75.5cm	78cm	80.5cm