

# BODY MEASUREMENTS



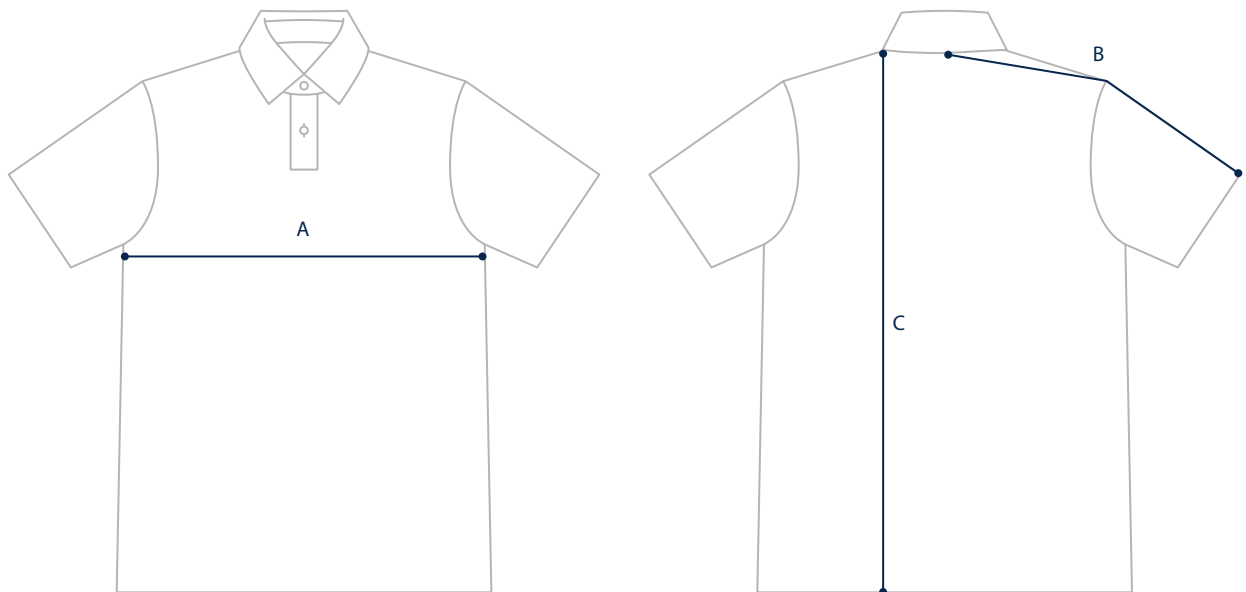
**CHEST**  
 Measure around your torso, under your arms around the fullest part of your chest.

## MEASUREMENTS

| SIZE  | XS          | S       | M            | L         | XL            | XXL       |
|-------|-------------|---------|--------------|-----------|---------------|-----------|
| CHEST | 81.5–86.5cm | 89–94cm | 96.5–101.5cm | 104–109cm | 111.5–116.5cm | 119–124cm |

# GARMENT MEASUREMENTS

The most precise way of finding your size. Measure a garment you love and compare to our garment measurements.



## MEASUREMENTS

| SIZE       | XS     | S      | M      | L    | XL     | XXL    |
|------------|--------|--------|--------|------|--------|--------|
| A: CHEST   | 44.5cm | 48.5cm | 52cm   | 56cm | 59.5cm | 63.5cm |
| B: SLEEVES | 41.5cm | 43cm   | 44.5cm | 46cm | 47.5cm | 49cm   |
| C: LENGTH  | 70cm   | 71cm   | 72.5cm | 75cm | 77.5cm | 80cm   |