

SHORT SLEEVE SHIRT

## BODY MEASUREMENTS

### NECK

Measure around the middle of your neck, leaving the tape loose.

### WAIST

Measure around your natural waist, keeping the tape a bit loose.

### CHEST

Measure around your torso, under your arms around the fullest part of your chest.



### SLIM FIT MEASUREMENTS

Our modern, tapered fit. Also, our most popular fit.

SIZE	XS	S	M	L	XL	XXL
NECK	34–35.5cm	35.5–37cm	38–39.5cm	40.5–42cm	43–44.5cm	45.5–47cm
CHEST	81.5–86.5cm	89–94cm	96.5–101.5cm	104–109cm	111.5–116.5cm	119–124cm
WAIST	66–71cm	73.5–78.5cm	81–86cm	89–94cm	96.5–101.5cm	104–109cm

### REGULAR FIT MEASUREMENTS

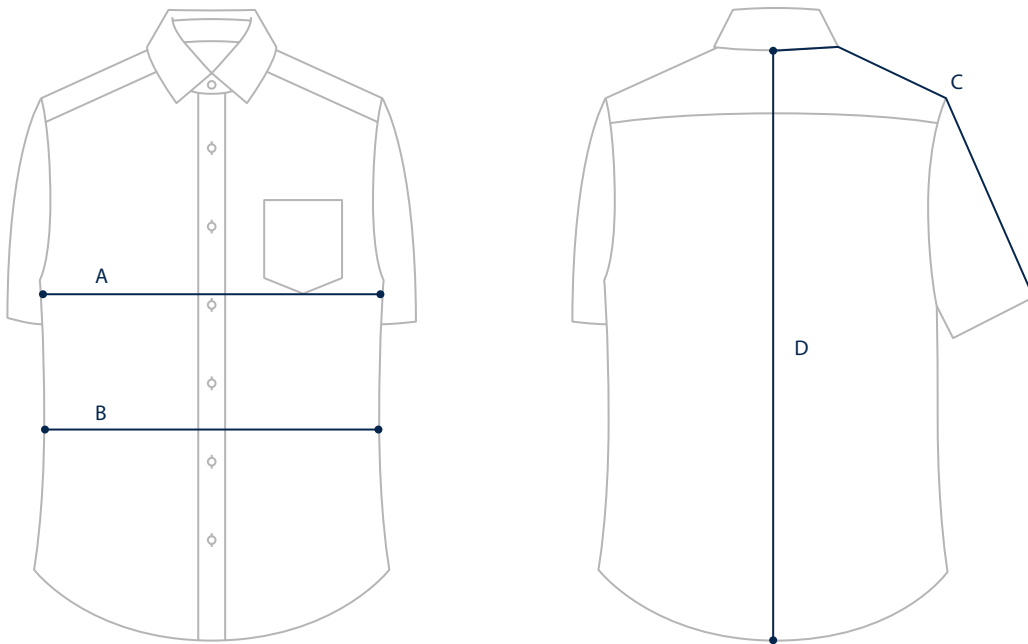
A more traditional fit with extra room in the chest, arms, and waist. Compared to the slim fit, the regular fit is 2.5cm larger in the chest and armhole and 5cm larger in the waist.

SIZE	XS	S	M	L	XL	XXL
NECK	34–35.5cm	35.5–37cm	38–39.5cm	40.5–42cm	43–44.5cm	45.5–47cm
CHEST	83–89cm	91.5–96.5cm	99–104cm	106.5–111.5cm	114–119cm	121.5–126.5cm
WAIST	71–76cm	78.5–83.5cm	86–91cm	94–99cm	101.5–106.5cm	109–114cm

SHORT SLEEVE SHIRT

## GARMENT MEASUREMENTS

The most precise way of finding your size. Measure a garment you love and compare to our garment measurements.



### SLIM FIT MEASUREMENTS

Our modern, tapered fit. Also, our most popular fit.

SIZE	XS	S	M	L	XL
A: CHEST	48cm	52cm	55.5cm	59.5cm	63cm
B: WAIST	44cm	48cm	52cm	55.5cm	59.5cm
C: SLEEVES	44cm	45cm	48cm	50cm	52cm
D: LENGTH	75cm	76cm	77.5cm	78.5cm	80cm

### REGULAR FIT MEASUREMENTS

A more traditional fit with extra room in the chest, arms, and waist. Compared to the slim fit, the regular fit is 2.5cm larger in the chest and armhole and 5cm larger in the waist.

SIZE	XS	S	M	L	XL	XXL
A: CHEST	49.5cm	53cm	57cm	60.5cm	64.5cm	68cm
B: WAIST	47cm	50.5cm	54.5cm	58cm	62cm	66cm
C: SLEEVES	44cm	46cm	48cm	50cm	52cm	54cm
D: LENGTH	75cm	76cm	77.5cm	78.5cm	80cm	81.5cm

Looking for help with a size? Contact us at [euhelp@woolandprince.com](mailto:euhelp@woolandprince.com)