

# BODY MEASUREMENTS



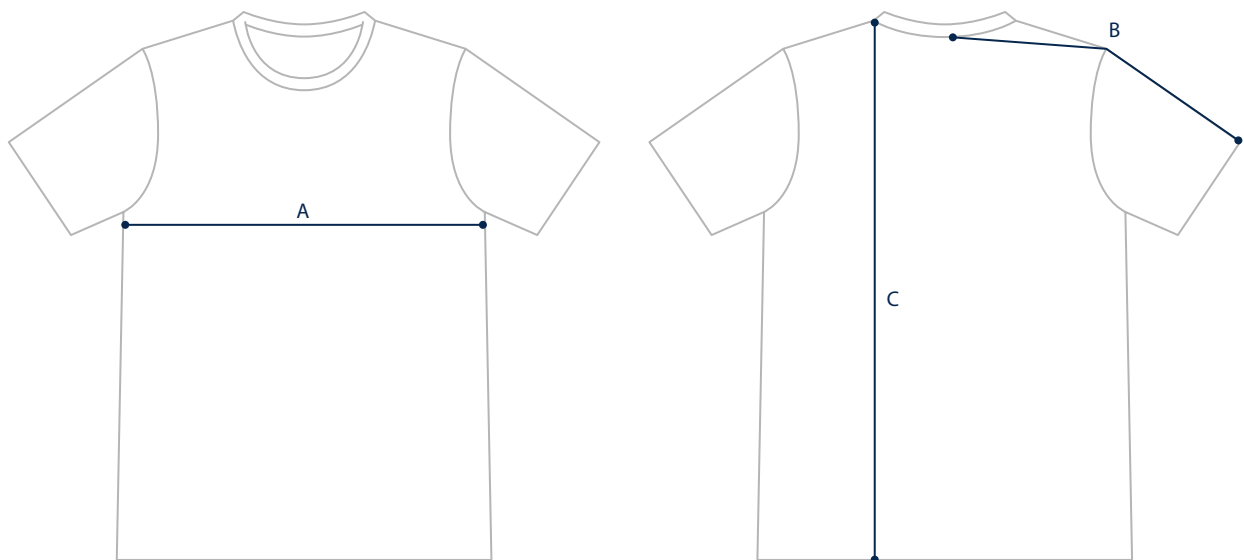
**CHEST**  
 Measure around your torso, under your arms around the fullest part of your chest.

## MEASUREMENTS

SIZE	XS	S	M	L	XL	XXL
CHEST	81.5–86.5cm	89–94cm	96.5–101.5cm	104–109cm	111.5–116.5cm	119–124cm

# GARMENT MEASUREMENTS

The most precise way of finding your size. Measure a garment you love and compare to our garment measurements.



## MEASUREMENTS

SIZE	XS	S	M	L	XL	XXL
A: CHEST	44.5cm	48.5cm	52cm	56cm	59.5cm	63.5cm
B: SLEEVES	41.5cm	43cm	44.5cm	46cm	47.5cm	49cm
C: LENGTH	68.5cm	70cm	71cm	73.5cm	76cm	78.5cm