

HEAVY CREW NECK TEE

# GARMENT MEASUREMENTS



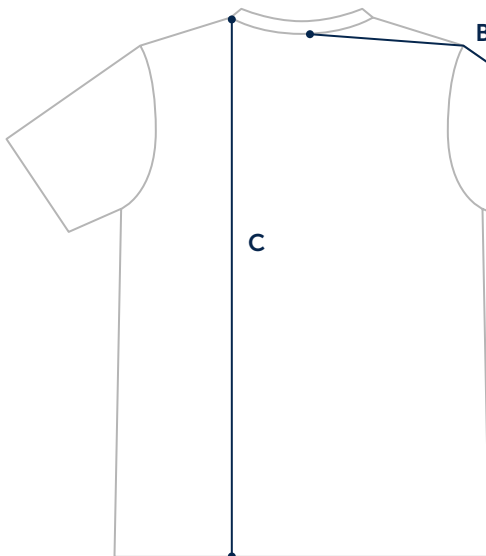
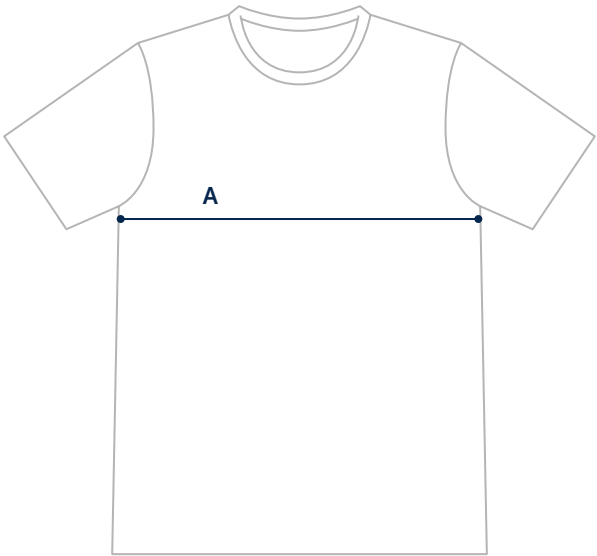
**CHEST**

Measure under your arms around the fullest part of your chest.

SIZE	XS	S	M	L	XL	XXL
CHEST	81.5–86.5cm	89–94cm	96.5–101.5cm	104–109cm	111.5–116.5cm	119–124cm

# GARMENT MEASUREMENTS

The most precise way of finding your size.  
Measure a garment you love and compare to our measurements.



**A. CHEST**

Measure width 1" below arm hole.

**B. SLEEVE**

Measure from center back to hem.

**C. LENGTH**

Measure from high point shoulder to bottom hem.

SIZE	XS	S	M	L	XL	XXL
A: CHEST	45cm	49cm	53cm	56.5cm	60cm	64cm
B: SLEEVE	41cm	43cm	44cm	46cm	48cm	49cm
C: LENGTH	69cm	69cm	71cm	74cm	77cm	81cm