

HEAVY CREW NECK TEE

GARMENT MEASUREMENTS



CHEST

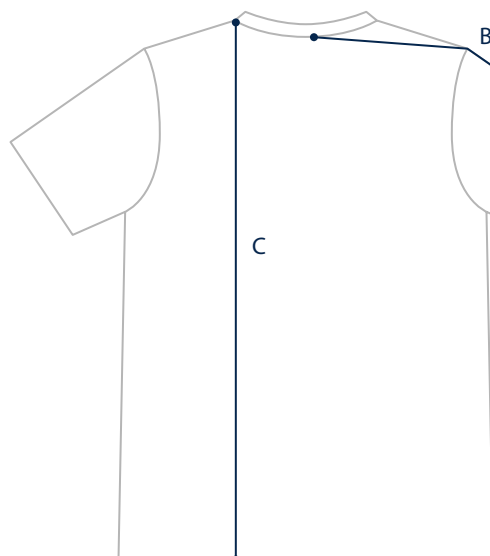
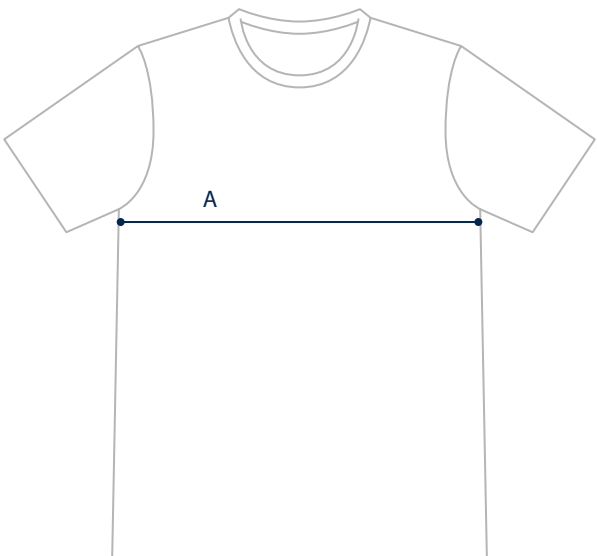
Measure under your arms around the fullest part of your chest.

SIZE	XS	S	M	L	XL	XXL
CHEST	81.5–86.5cm	89–94cm	96.5–101.5cm	104–109cm	111.5–116.5cm	119–124cm

GARMENT MEASUREMENTS

The most precise way of finding your size.

Measure a garment you love and compare to our measurements.



A. CHEST

Measure width 2.5cm below arm hole.

B. SLEEVE

Measure from center back to hem.

C. LENGTH

Measure from high point shoulder to bottom hem.

SIZE	XS	S	M	L	XL	XXL
A: CHEST	44.5cm	48.5cm	52cm	56cm	59.5cm	63.5cm
B: SLEEVE	41.5cm	43cm	44.5cm	46cm	47.5cm	49cm
C: LENGTH	68.5cm	70cm	71cm	73cm	75cm	77cm