

GARMENT MEASUREMENTS



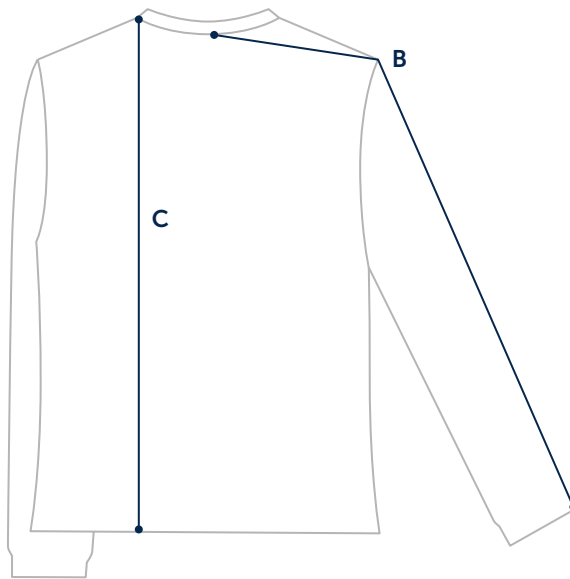
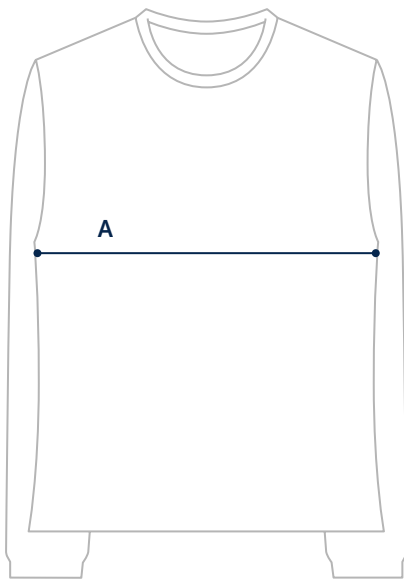
CHEST

Measure under your arms around the fullest part of your chest.

SIZE	XS	S	M	L	XL	XXL
CHEST	81.5–86.5cm	89–94cm	96.5–101.5cm	104–109cm	111.5–116.5cm	119–124cm

GARMENT MEASUREMENTS

The most precise way of finding your size.
Measure a garment you love and compare to our measurements.



A. CHEST

Measure width 2.5cm below arm hole.

B. SLEEVE

Measure from center back to hem.

C. LENGTH

Measure from high point shoulder to bottom hem.

SIZE	XS	S	M	L	XL	XXL
A: CHEST	45cm	49cm	52.5cm	56.5cm	60.5cm	64cm
B: SLEEVE	85.5cm	87.5cm	89cm	90cm	91.5cm	92.5cm
C: LENGTH	69cm	69cm	71cm	74.5cm	77.5cm	80.5cm