

GARMENT MEASUREMENTS



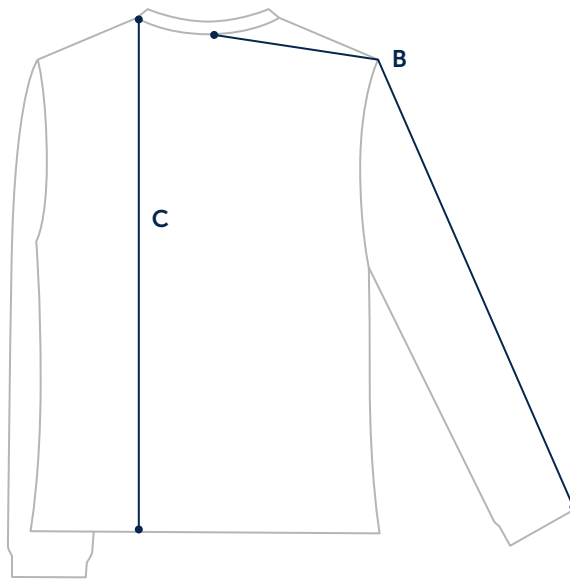
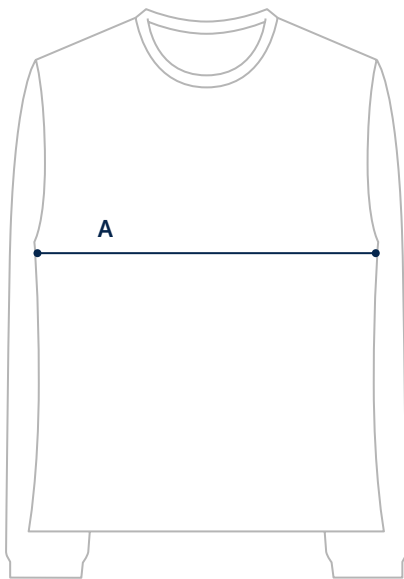
CHEST

Measure under your arms around the fullest part of your chest.

SIZE	XS	S	M	L	XL	XXL
CHEST (cm)	81.5–86.5	89–94	96.5–101.5	104–109	111.5–116.5	119–124

GARMENT MEASUREMENTS

The most precise way of finding your size.
Measure a garment you love and compare to our measurements.



A. CHEST

Measure width 2.5cm below arm hole.

B. SLEEVE

Measure from center back to hem.

C. LENGTH

Measure from high point shoulder to bottom hem.

SIZE	XS	S	M	L	XL	XXL
A: CHEST (cm)	44	48	52	56	60	63.5
B: SLEEVE (cm)	85	86	88	89	90	91
C: LENGTH (cm)	68.5	70	71	73	75	77