

GARMENT MEASUREMENTS



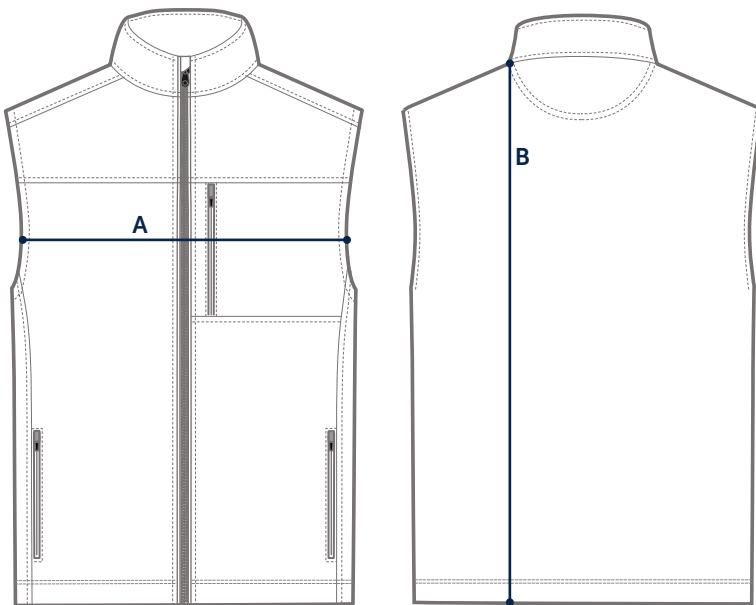
CHEST

Measure under your arms around the fullest part of your chest.

SIZE	S	M	L	XL	XXL
CHEST (CM)	89–94	96.5–102	104–109	112–117	119–124

GARMENT MEASUREMENTS

The most precise way of finding your size.
Measure a garment you love and compare to our measurements.



A. CHEST WIDTH

Measure across chest, 1" below the armhole.

B. LENGTH

Measure from high point shoulder to bottom hem.

VEST SIZE	S	M	L	XL	XXL
A: CHEST (CM)	50	54	58	62	65
B: LENGTH (CM)	67	69	70	72	74