

BODY MEASUREMENTS



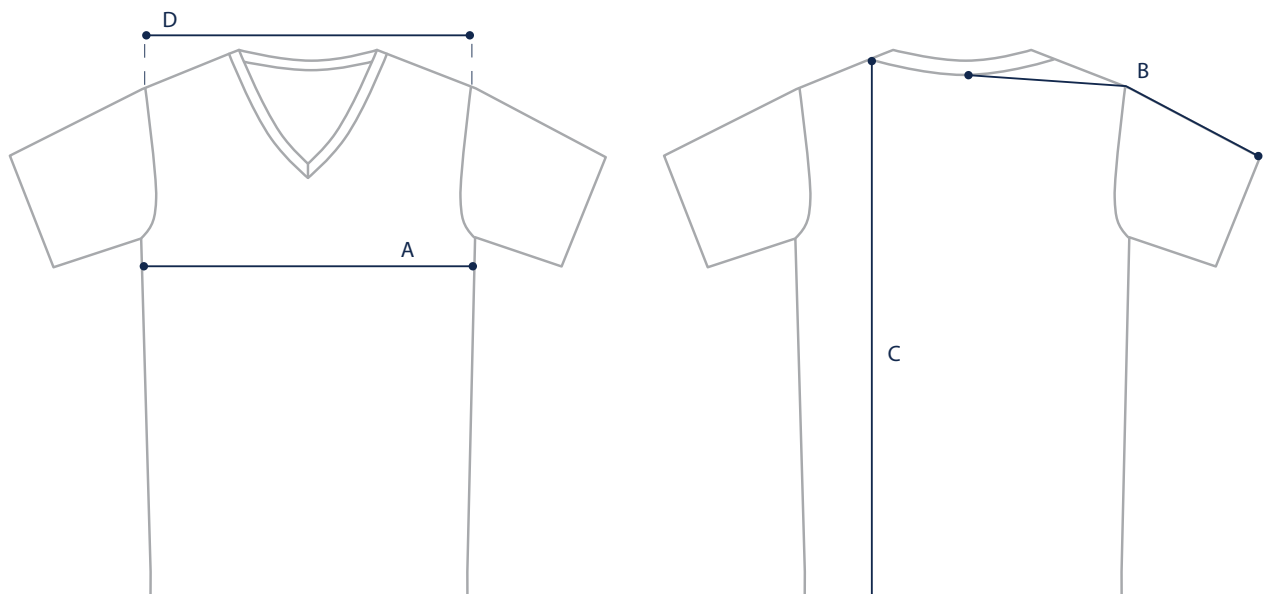
CHEST
 Measure around your torso, under your arms around the fullest part of your chest.

MEASUREMENTS

SIZE	XS	S	M	L	XL	XXL
CHEST	81.5-86.5cm	89-94cm	96.5-101.5cm	104-109cm	111.5-116.5cm	119-124cm

GARMENT MEASUREMENTS

The most precise way of finding your size. Measure a garment you love and compare to our garment measurements.



MEASUREMENTS

SIZE	XS	S	M	L	XL	XXL
A: CHEST	42cm	45.5cm	49.5cm	53.5cm	57cm	61cm
B: SLEEVES	40cm	41.5cm	43cm	45cm	46.5cm	48cm
C: LENGTH	72.5cm	74.5cm	76cm	78cm	80cm	82cm
D: ACROSS SHOULDER	39.5cm	41.5cm	43cm	45cm	47cm	49cm