

INTERLOCK KNIT SHORTS

# BODY MEASUREMENTS

Semi-fitted knit shorts



## WAIST

Measure around your natural waist, keeping the tape a bit loose.

SHORT SIZE	XS	S	M	L	XL	XXL
WAIST (CM)	66–71cm	72–79cm	80–86cm	87–94cm	95–102cm	103–109cm

## GARMENT MEASUREMENTS

The most precise way of finding your size.  
Measure a garment you love and compare to our measurements.

### A. WAIST

Measure around top of waistband.

### B. LOW HIP

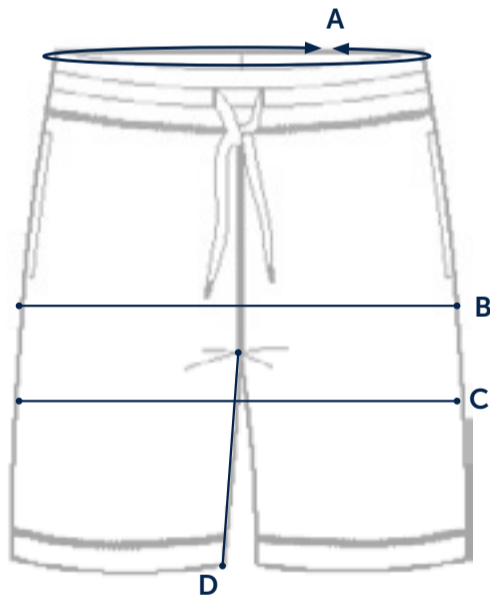
Measure across the widest area of the short. Double the measurement.

### C. THIGH

Measure across thigh, 1 1/2" below intersection of crotch and inseam. Double the measurement.

### D. INSEAM

Measure seam along inside leg.



SHORT SIZE	XS	S	M	L	XL	XXL
A: WAIST	65cm	72cm	80cm	87.5cm	95cm	103cm
B: LOW HIP	91.5cm	101.5cm	109cm	117cm	124.5cm	132cm
C: THIGH	61cm	63cm	65cm	68.5cm	72cm	76cm
D: INSEAM	23cm	23cm	23cm	23cm	23cm	23cm